



Beschrijving: COATED COTTON FLOWERS

Samenstelling: 90%CO/10%PC

Breedte: 146cm

Gewicht: 125gm2



C4169.001  
GREEN



C4169.003  
NAVY



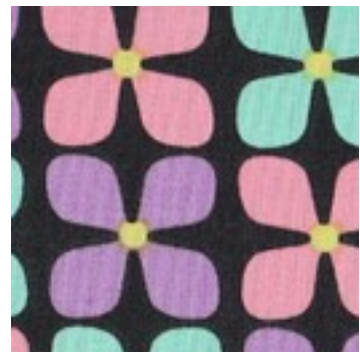
C4169.005  
BLACK



C4169.011  
GREEN



C4169.013  
NAVY



C4169.015  
BLACK