



Beschrijving: JERSEY PATCHES AND STRIPES

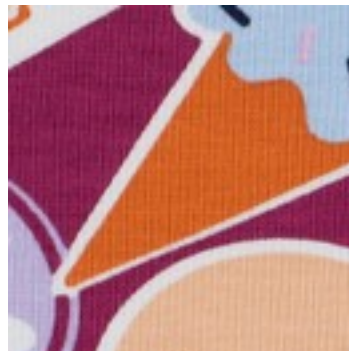
Samenstelling: 95%CO/5%EA

Breedte: 150cm

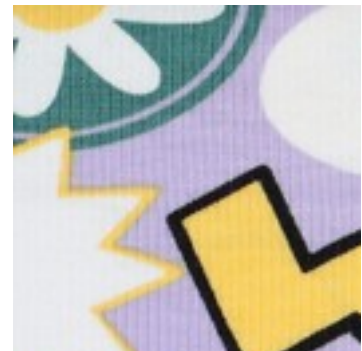
Gewicht: 200gm2



03101.004  
LIGHT PINK



03101.005  
FUCHSIA



03101.009  
LILAC



03101.013  
MULTI COLOUR



03101.015  
MULTI COLOUR