



Beschreibung: JERSEY PATCHES AND STRIPES

Zusammensetzung: 95%CO/5%EA

Breite: 150cm

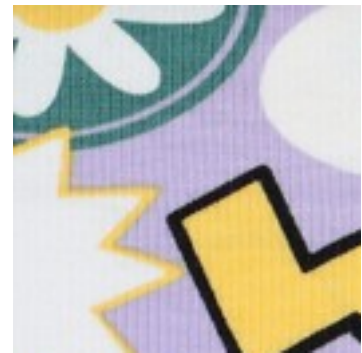
Gewicht: 200gm2



03101.004
LIGHT PINK



03101.005
FUCHSIA



03101.009
LILAC



03101.013
MULTI COLOUR



03101.015
MULTI COLOUR