



Beschreibung: BABYCORD STRETCH 28W

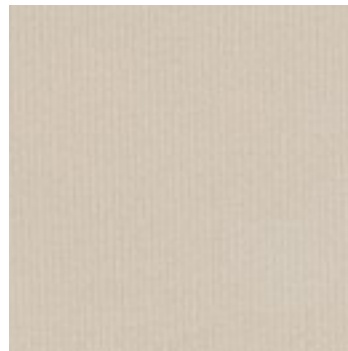
Zusammensetzung: 98%CO/2%EA

Breite: 145cm

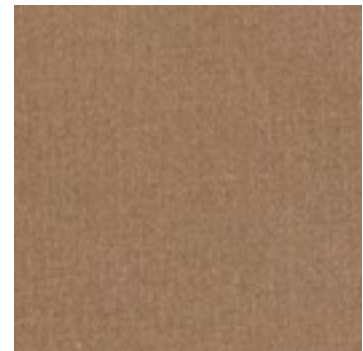
Gewicht: 190gm2



04663.002
ECRU



04663.003
BEIGE



04663.004
CAPPUCCHINO



04663.005
BASIL



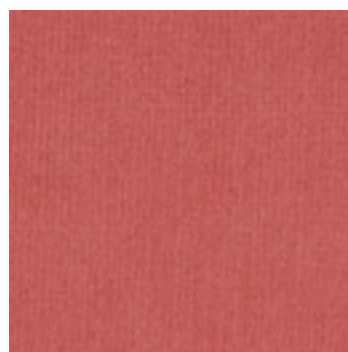
04663.006
JEANS



04663.007
PALE TURQOISE



04663.008
DARK POWDER



04663.009
BLUSH