

Beschreibung: POPLIN GOTS CONSTRUCTION VEHICLES

Zusammensetzung: 100%CO

Breite: 150cm

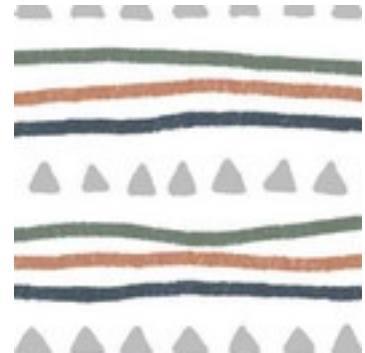
Gewicht: 130gm2



09935.002
WHITE



09935.008
BLUE SHADOW



09935.012
WHITE



09935.014
LIGHT GREY



09935.018
BLUE SHADOW



09935.020
NAVY